

CONTRACTOR SHALL ENGAGE AN ACCREDITED HYDRAULICS ENGINEER TO INSPECT AND PROVIDE WORK AS EXECUTED DRAWINGS TO THE PRINCIPAL

THE CONTRACTOR SHALL ARRANGE AND PAY ALL FEES TO CONNECT TO COUNCIL'S STORMWATER SYSTEM, IN COMPLIANCE WITH COUNCIL REQUIREMENTS.

ALL FOOTPATH PAVEMENTS TO BE FALL TO GRASSED AREA WITH 1.0% SLOPE MIN.

LINEAR DRAIN REFER TO ARCH'S DWG FOR DETAILS.

LEGEND
• DP - DENOTES DOWNPIPE
• PD - DETONES FLOOR DRAIN
• PPD - DENOTES PLANTER DRAIN

STORMWATER SITE DRAINAGE LAYOUT PLAN

- ALL PIPELINES UNDER THE BUILDING SHALL BE CONSTRUCTED AND TESTED AS PER SECTION 10 OF AS/NZS 3500.3:2003
- ALL PIPES SHALL BE SEWER GRADE EXTRA HEAVY DUTY. DENOTES Ø150 UPVC WITH 1.0% MIN. SLOPE UNO.

- ALL STORMWATER PITS IN LANDSCAPE OR TURFED AREAS TO HAVE PERFORATED GALV. MESH BELOW GRATE
- ALL PITS/GRATE DRAIN IN TRAFFICABLE AREAS TO HAVE A GALVANISED HINGED BOLT DOWN AND HEELGUARD GRATES

ALL AGGREGATE PIPES TO RETAINING WALL & UNDER BUILDING TO BE CONNECTED TO NEAREST DOWNSTREAM STORMWATER PIT WITH 1.0% MIN. FALL

ISSUE FOR DA

NOT TO BE USED FOR CONSTRUCTION PURPOSES

© COPYRIGHT Michael Ell Consulting Engineers Pty. Ltd.
The copyright of this drawing remains the property of Michael Ell Consulting Engineers Pty. Ltd. and must not be reproduced in whole or in part without written permission. Do not scale off this drawing. Use figured dimensions. Verify all dimensions on site.

Q	22.02.24	UPDATES TO NEW ARCH'S DWG
P	17.01.24	UPDATES TO NEW ARCH'S DWG
O	17.07.23	ISSUE FOR DA
N	17.02.23	DPs ADDED
M	13.12.22	UPDATES TO ARCH'S CHANGES
L	11.04.22	UPDATES TO NEW ARCH'S DWG
K	11.11.21	UPDATES TO NEW ARCH'S DWG
J	12.10.21	UPDATES TO NEW SURVEY DWG AND ARCH'S DWG
I	05.03.21	AMENDED AS AUTHORITY'S COMMENTS
H	11.12.20	AMENDED AS AUTHORITY'S COMMENTS
G	29.10.20	ARCH'S CHANGES
REV	DATE	NOTATION/AMENDMENT
DO NOT SCALE DRAWINGS. CHECK ALL DIMENSIONS ON SITE. FIGURED DIMENSIONS TAKE PRECEDENCE.		

ARCHITECT BARRY RUSH & ASSOCIATES PTY LTD PH (02) 9555 8028	STRUCTURAL CONSULTANT	BUSINESS PARTNER
PROJECT MANAGER LAND & HOUSING CORPORATION PH (02) 8753 9000	CIVIL AND HYDRAULIC CONSULTING ENGINEERS PTY LTD PH (02) 9807 5355	
LANDSCAPE CONSULTANT	ELECTRICAL AND MECHANICAL CONSULTANT	

PROJECT: SENIORS LIVING HOUSING DEVELOPMENT
98-102 ALBERT STREET REVESBY
LOTS 38,39 & 40 in Sect 13 DP 2343

TITLE: SITE STORMWATER DRAINAGE LAYOUT PLAN
FILE: 14236-C01q
PLOTTED:

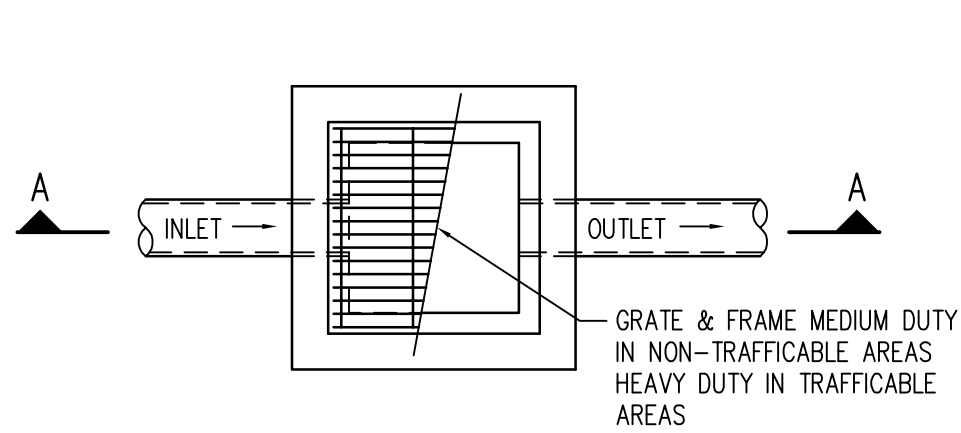
STATUS: DA	PROJECT No: BGGXT
DATE: 16.04.15	SCALE: 1:100
DESIGNED: AG	APPROVED: Q
TYPE: C	SHEET: C01



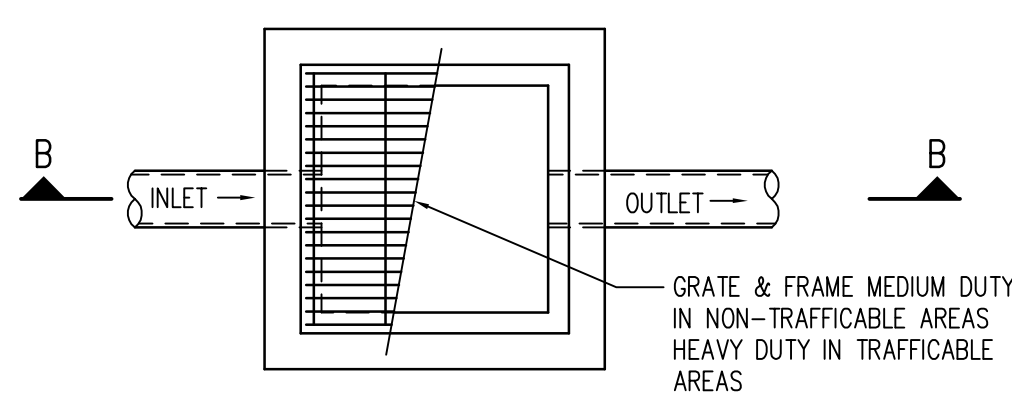
LOCKED BAG 5022
PARRAMATTA NSW 2124
PHONE No 1800 738 718
https://www.dpie.nsw.gov.au/land-and-housing-corporation

Barry Rush & Associates Pty Ltd
Architects: Nominated Architect: Barry John Rush
ARB Registration No 3753
Suite 25A, 2 Beattie Street, Balmian, NSW
Phone: (02) 9555 8028 Email: info@barryrush.com.au
www.barryrush.com.au

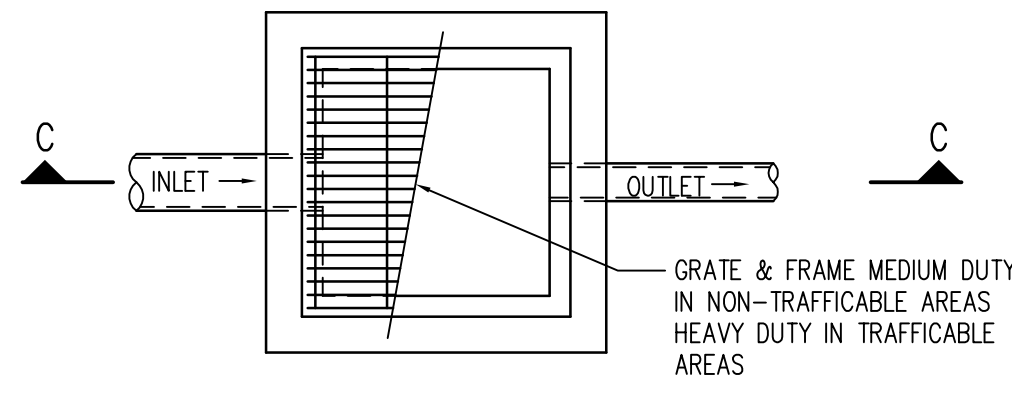
0 5 10 20 40MM
SCALE FOR PRINTING
PURPOSE ONLY



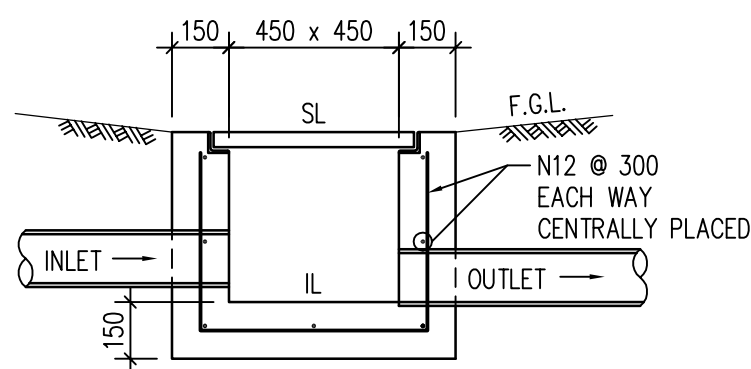
450 x 450 STORMWATER PIT
PRECAST CONCRETE PITS MAY BE
SUBSTITUTED SUBJECT TO APPROVAL



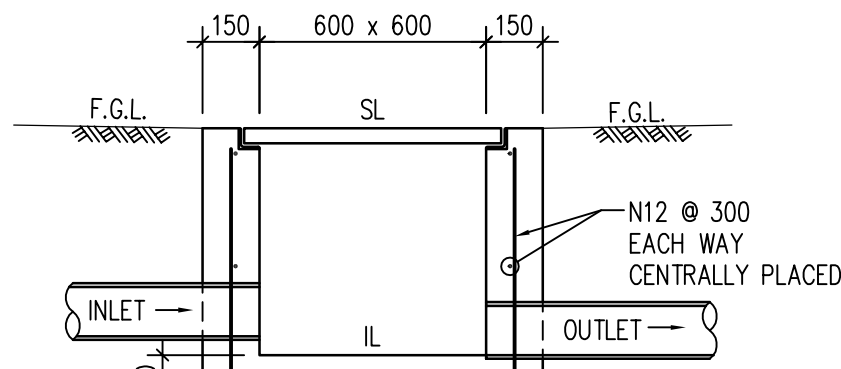
600 x 600 STORMWATER PIT
PRECAST CONCRETE PITS MAY BE
SUBSTITUTED SUBJECT TO APPROVAL



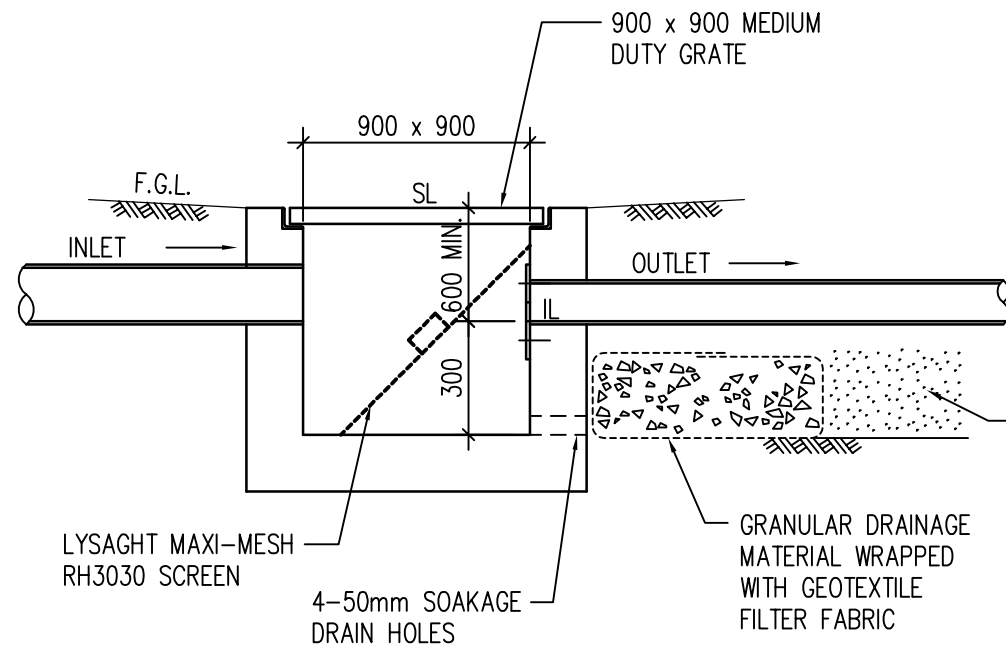
900 x 900 SILT ARRESTOR PIT
PRECAST CONCRETE PITS MAY BE
SUBSTITUTED SUBJECT TO APPROVAL



SECTION A-A

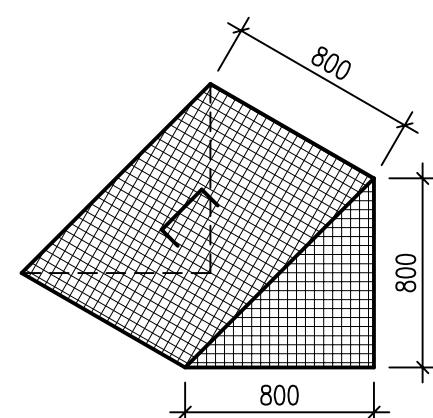


SECTION B-B



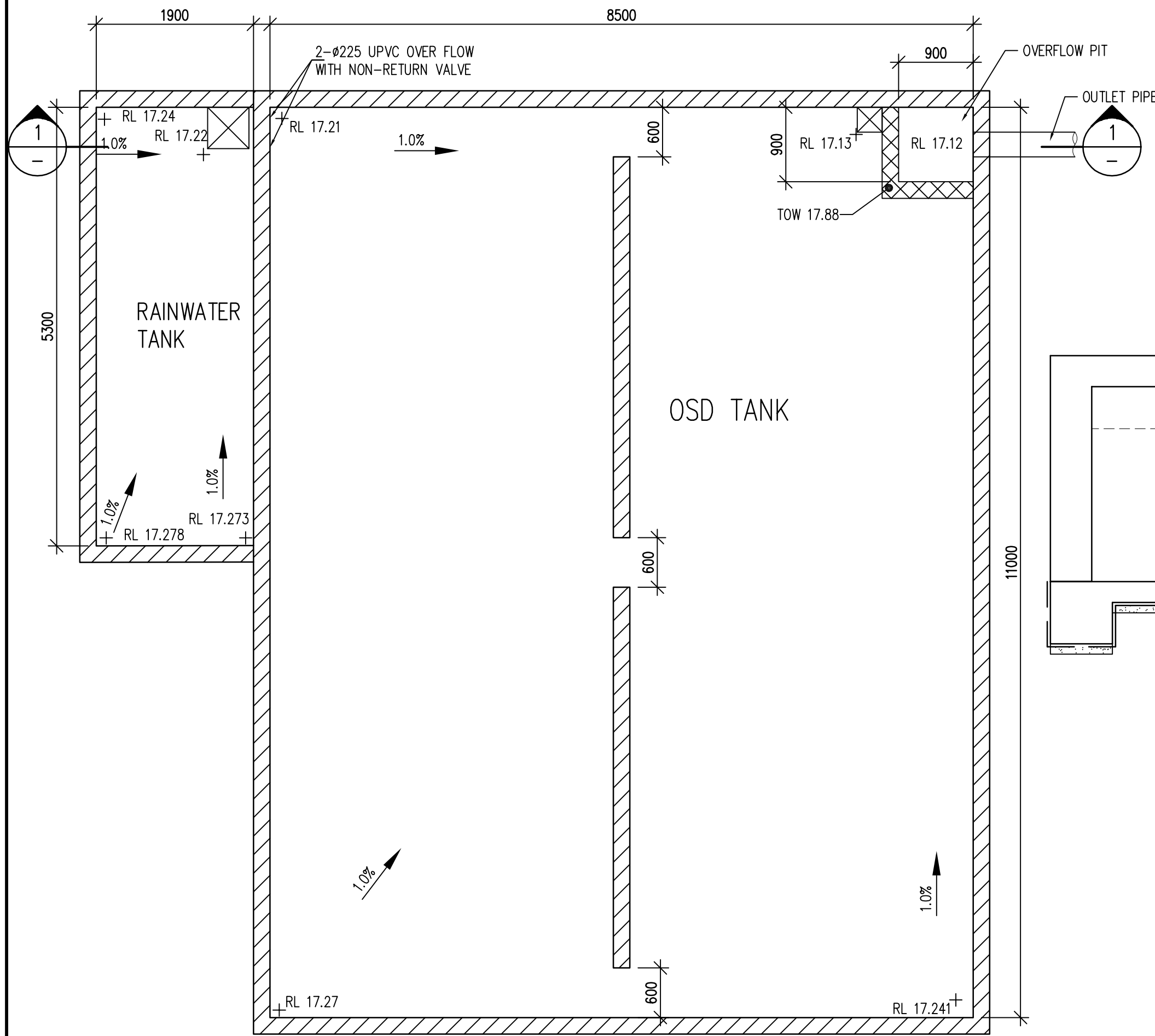
SECTION C-C

SCREEN MADE FROM LYSAGHTS
MAXIMESH 3030 FROM H & U
ENGINEERING PH. (02) 9790-0100
OR EQUIVALENT

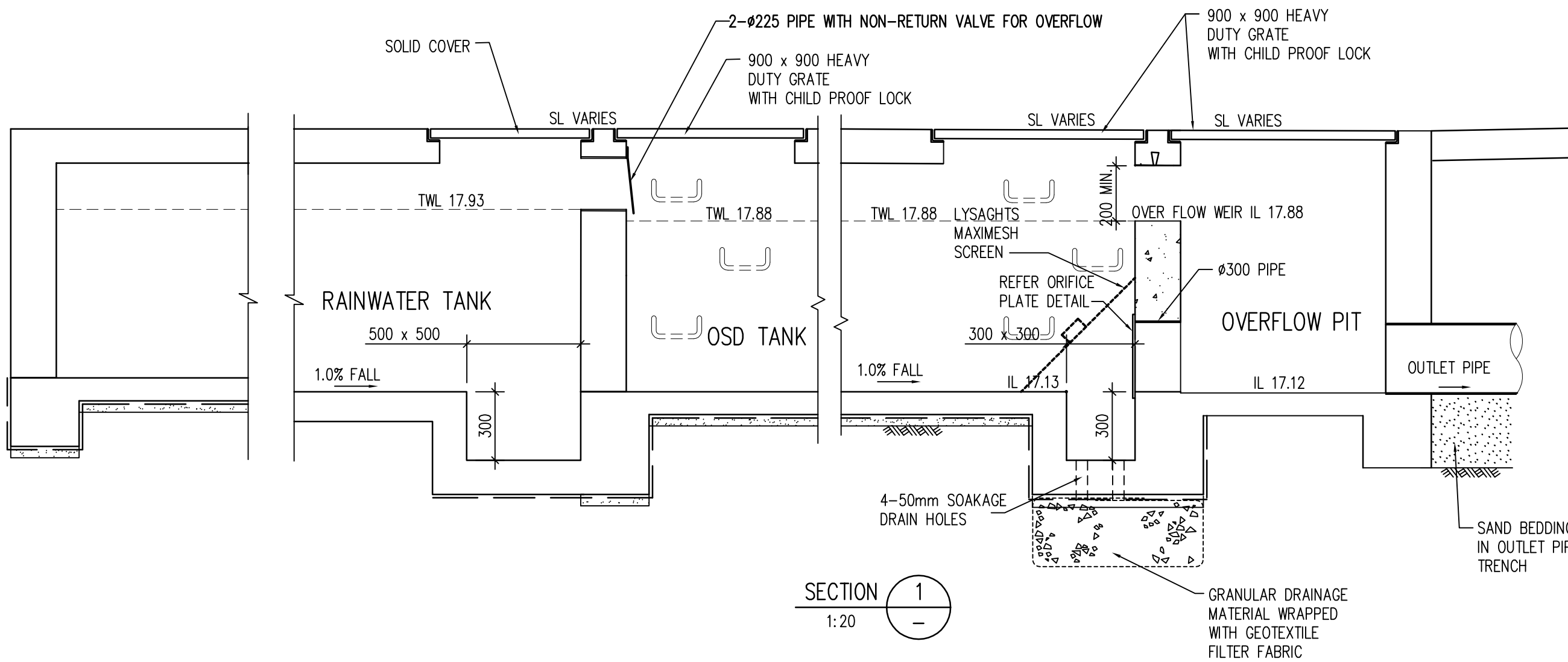


ISOMETRIC VIEW

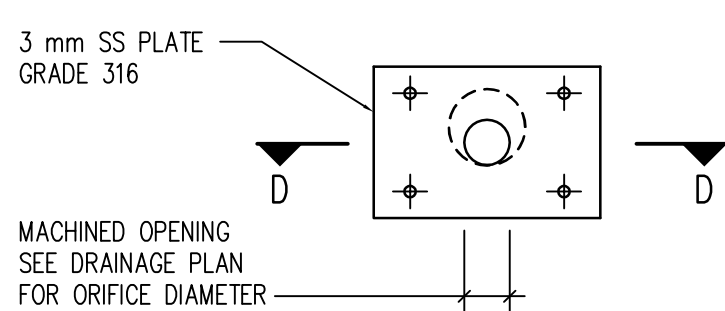
LITTER & LEAF SCREEN DETAIL



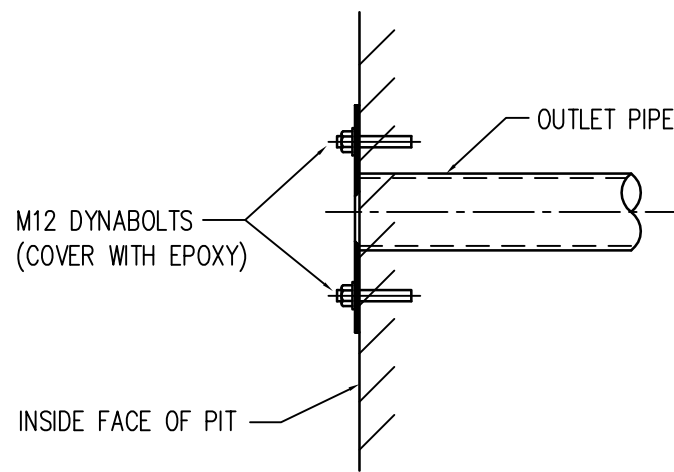
OSD/RAINWATER TANK PLAN
SCALE 1:50



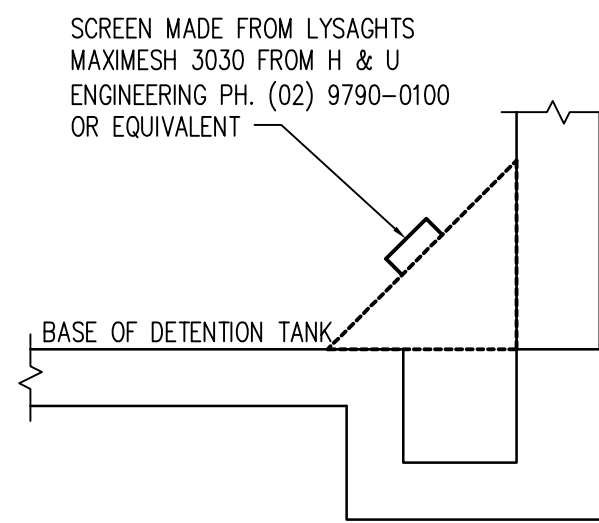
SECTION 1
1:20



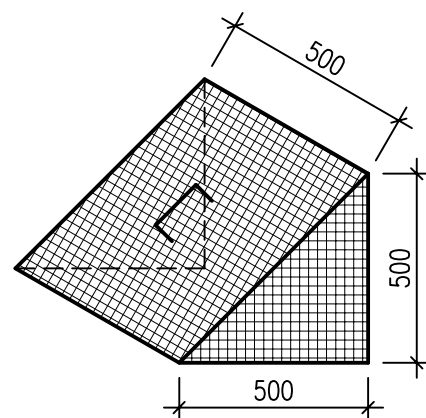
ORIFICE PLATE ARRANGEMENT
SCALE 1:10



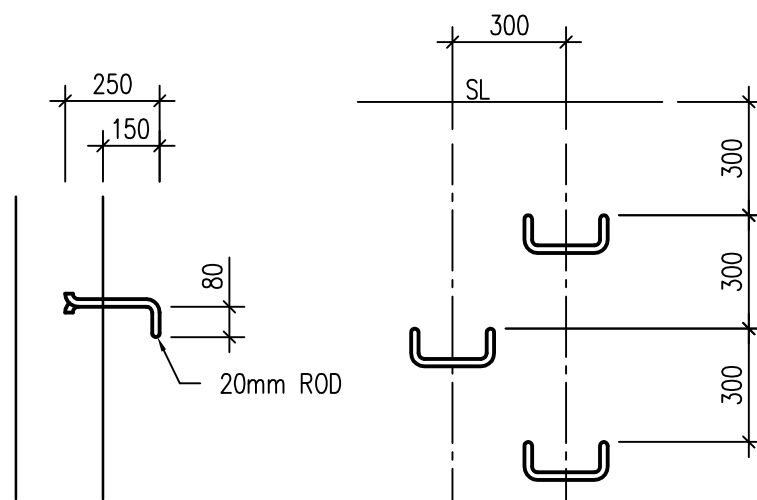
SECTION D-D
SCALE 1:10



LITTER & LEAF SCREEN DETAIL



ISOMETRIC VIEW



STEP IRON DETAIL
PROVIDE STEP IRONS WHEN PITS/TANKS
ARE GREATER THAN 1000 DEEP

ISSUE FOR DA
NOT TO BE USED FOR CONSTRUCTION PURPOSES

© COPYRIGHT Michael Ell Consulting Engineers Pty. Ltd.
The copyright of this drawing remains the property
of Michael Ell Consulting Engineers Pty. Ltd. and
must not be reproduced in whole or in part without
written permission. Do not scale off this drawing.
Use figured dimensions. Verify all dimensions on site.



LOCKED BAG 5022
PARRAMATTA NSW 2124
PHONE No 1800 738 718
https://www.dpie.nsw.gov.au/land-and-housing-corporation



Barry Rush & Associates Pty Ltd
Architects, Nominated Architect: Barry John Rush
ARB Registration No 3753
Suite 25A, 2 Beattie Street, Balmain, NSW
Phone: (02) 9555 8028 Email: info@barryrush.com.au
www.barryrush.com.au

REV	DATE	NOTATION/AMENDMENT
G	17.07.23	ISSUE FOR DA
F	12.10.21	UPDATES TO NEW SURVEY DWG AND ARCH'S DWG
E	01.10.20	FOR TENDER ISSUE
D	21.09.20	ARCH'S NEW PLAN
C	22.07.20	ARCH'S NEW PLAN
B	15.04.15	UPDATE PITS LOCATION
A	06.03.15	90% ISSUE

ARCHITECT BARRY RUSH & ASSOCIATES PTY LTD PH (02) 9555 8028	STRUCTURAL CONSULTANT
PROJECT MANAGER LAND & HOUSING CORPORATION PH (02) 8753 9900	CIVIL AND HYDRAULIC CONSULTANT MICHAEL ELL CONSULTING ENGINEERS PTY LTD PH (02) 9807 5365
LANDSCAPE CONSULTANT	ELECTRICAL AND MECHANICAL CONSULTANT

BUSINESS PARTNER:

PROJECT:

**SENIORS LIVING
HOUSING DEVELOPMENT
98-102 ALBERT STREET
REVESBY**
LOTS 38,39 & 40 in Sect 13 DP 2343

TITLE:

STORMWATER DETAILS

FILE: 14236-C02g

PLOTTED:

STATUS:

DA

DATE:

15.04.15

SCALE:

1:20

CONTRACT Job No:

14236

PROJECT No:

BGGXT

STAGE:

DA

DRAWN:

DC

DESIGNED:

AG

APPROVED:

AG

TYPE:

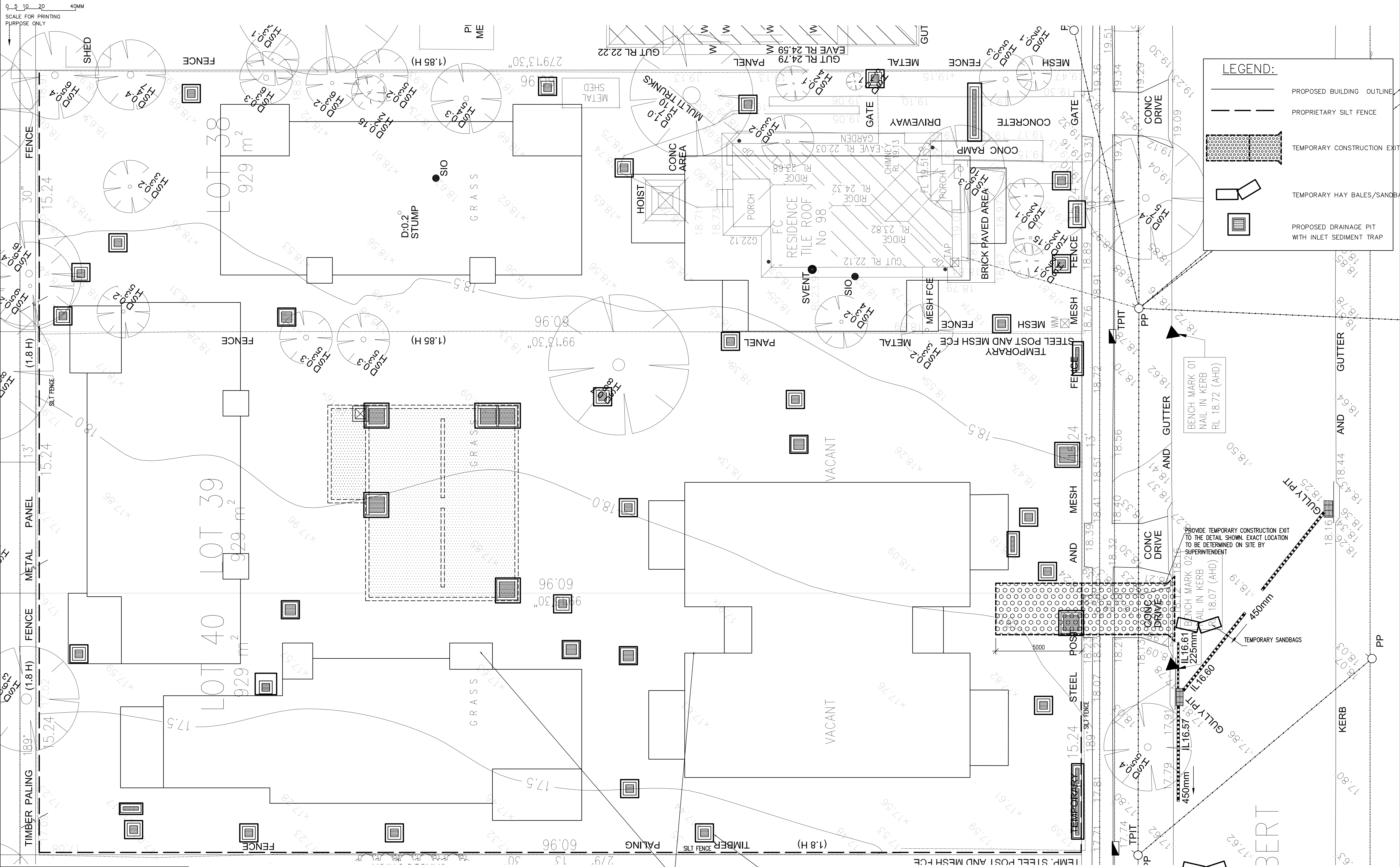
C

SHEET:

C02

REV:

G



LEGEND:

- PROPOSED BUILDING OUTLINE
- PROPRIETARY SILT FENCE
- TEMPORARY CONSTRUCTION EXIT
- TEMPORARY HAY BALES/SANDBAGS
- PROPOSED DRAINAGE PIT WITH INLET SEDIMENT TRAP

© COPYRIGHT Michael Ell Consulting Engineers Pty. Ltd.
The copyright of this drawing remains the property of Michael Ell Consulting Engineers Pty. Ltd. and must not be reproduced in whole or in part without written permission. Do not scale off this drawing. Use figured dimensions. Verify all dimensions on site.

NSW GOVERNMENT

LOCKED BAG 5022
PARRAMATTA NSW 2124
PHONE No 1800 738 718
<https://www.dpie.nsw.gov.au/land-and-housing-corporation>

Barry Rush & Associates Pty Ltd
Architects, Nominated Architect: Barry John Rush
ARB Registration No 3753
Suite 25A, 2 Beattie Street, Balmain, NSW
Phone: (02) 9555 8028 Email: info@barryrush.com.au
www.barryrush.com.au

H	17.07.23	ISSUE FOR DA
G	21.02.22	UPDATES TO PIT LOCATION
F	12.10.21	UPDATES TO NEW SURVEY DWG AND ARCH'S DWG
E	01.10.20	FOR TENDER ISSUE
D	21.09.20	ARCH'S NEW PLAN
C	22.07.20	ARCH'S NEW PLAN
B	15.04.15	UPDATE PITS LOCATION
A	06.03.15	90% ISSUE
REV	DATE	NOTATION/AMENDMENT
DO NOT SCALE DRAWINGS. CHECK ALL DIMENSIONS ON SITE. FIGURED DIMENSIONS TAKE PRECEDENCE.		

EROSION AND SEDIMENT CONTROL PLAN

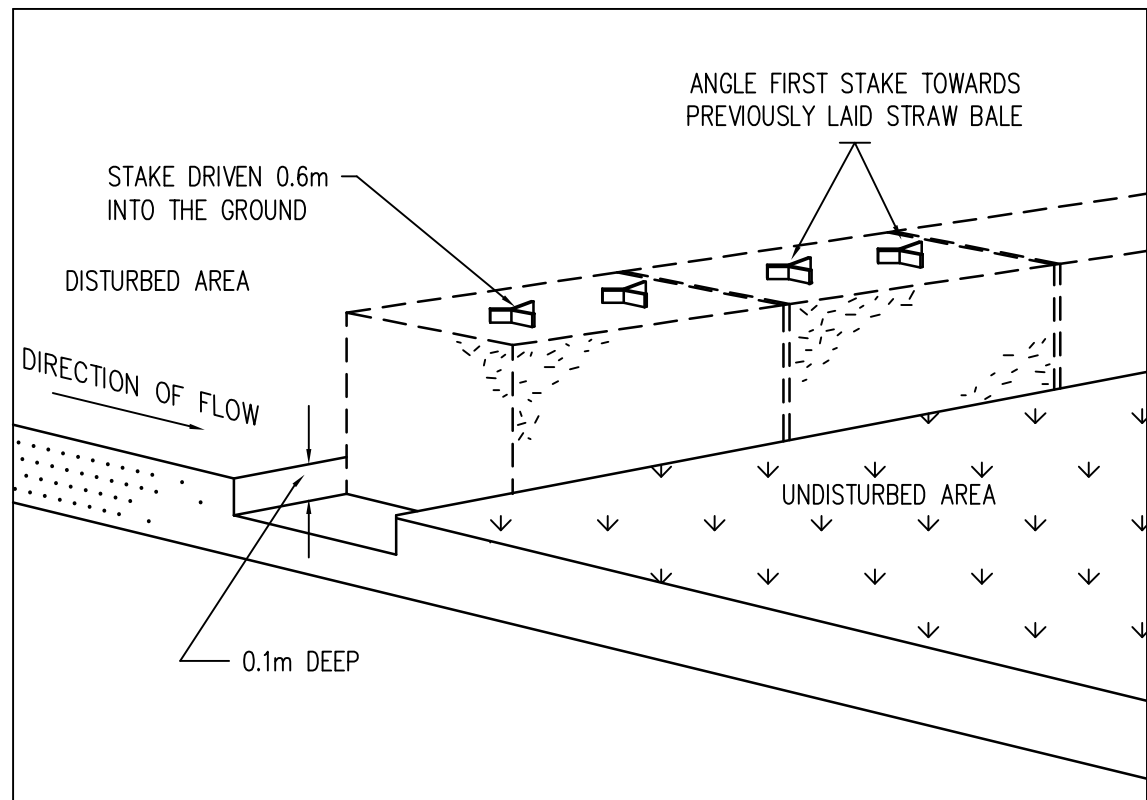
ARCHITECT BARRY RUSH & ASSOCIATES PTY LTD PH (02) 9555 8028	STRUCTURAL CONSULTANT
PROJECT MANAGER LAND & HOUSING CORPORATION PH (02) 8753 9000	CIVIL AND HYDRAULIC CONSULTANT MICHAEL ELL CONSULTING ENGINEERS PTY LTD PH (02) 9807 5385
LANDSCAPE CONSULTANT	ELECTRICAL AND MECHANICAL CONSULTANT

BUSINESS PARTNER:
PROJECT: SENIORS LIVING HOUSING DEVELOPMENT 98-102 ALBERT STREET REVESBY LOTS 38,39 & 40 in Sect 13 DP 2343

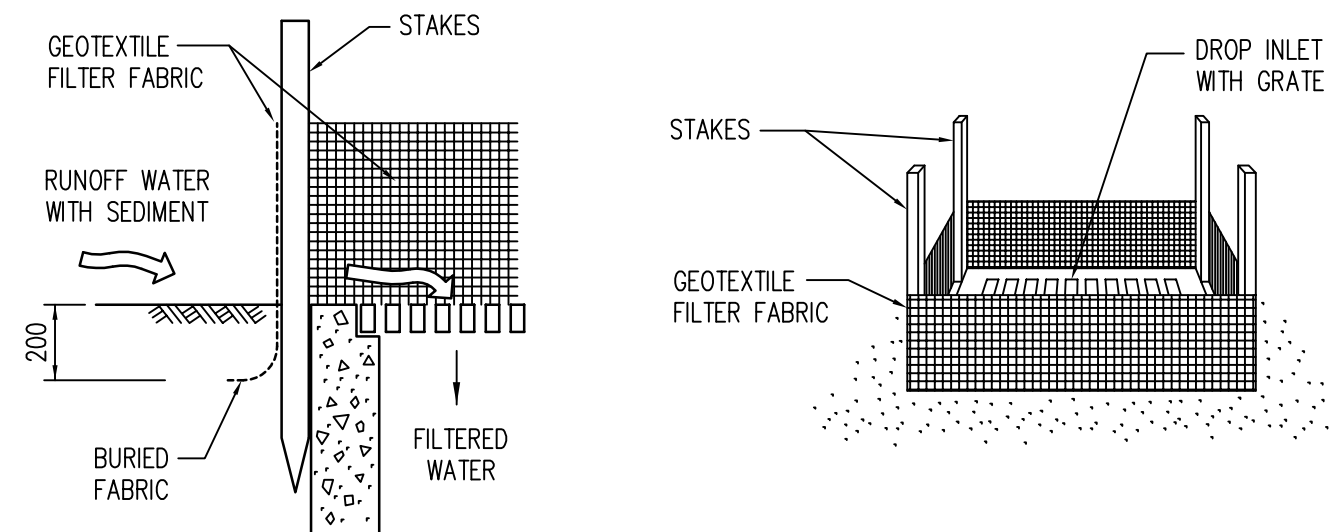
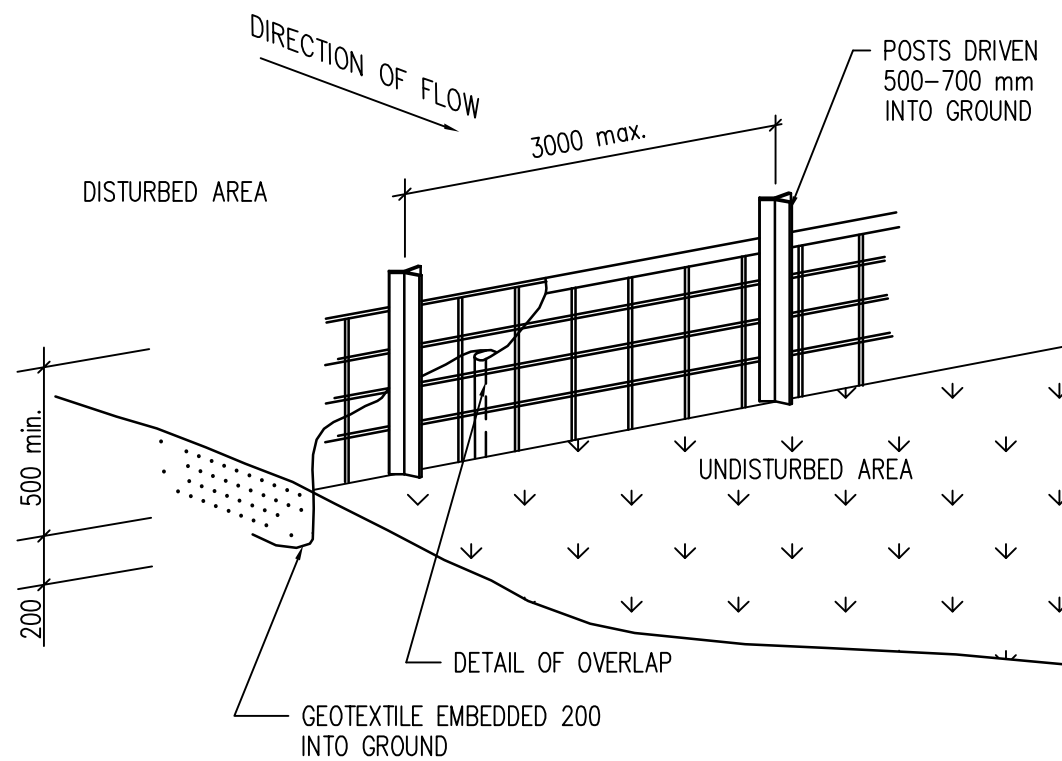
ISSUE FOR DA
NOT TO BE USED FOR CONSTRUCTION PURPOSES

TITLE: EROSION AND SEDIMENT CONTROL PLAN
FILE: 14236-C03h

STATUS: DA	PROJECT No: BGGXT
DATE: 16.04.15	SCALE: 1:100
STAGE: DA	DESIGNED: AG
TYPE: C	SHEET: C03
APPROVED: H	REV:



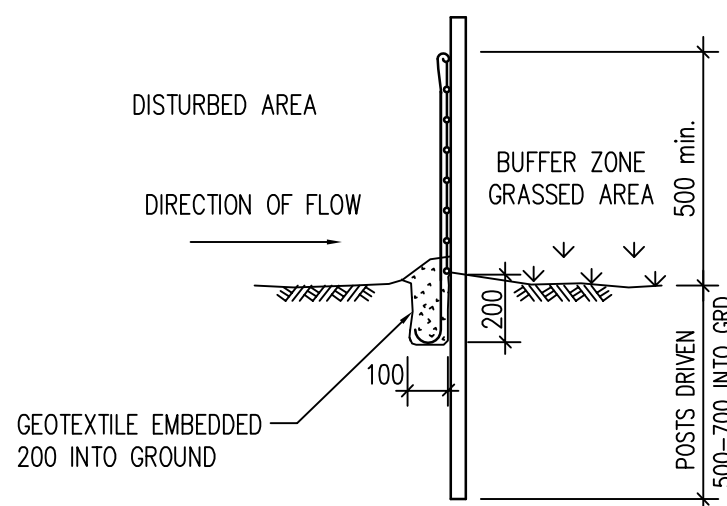
STRAW BALE SEDIMENT FILTER



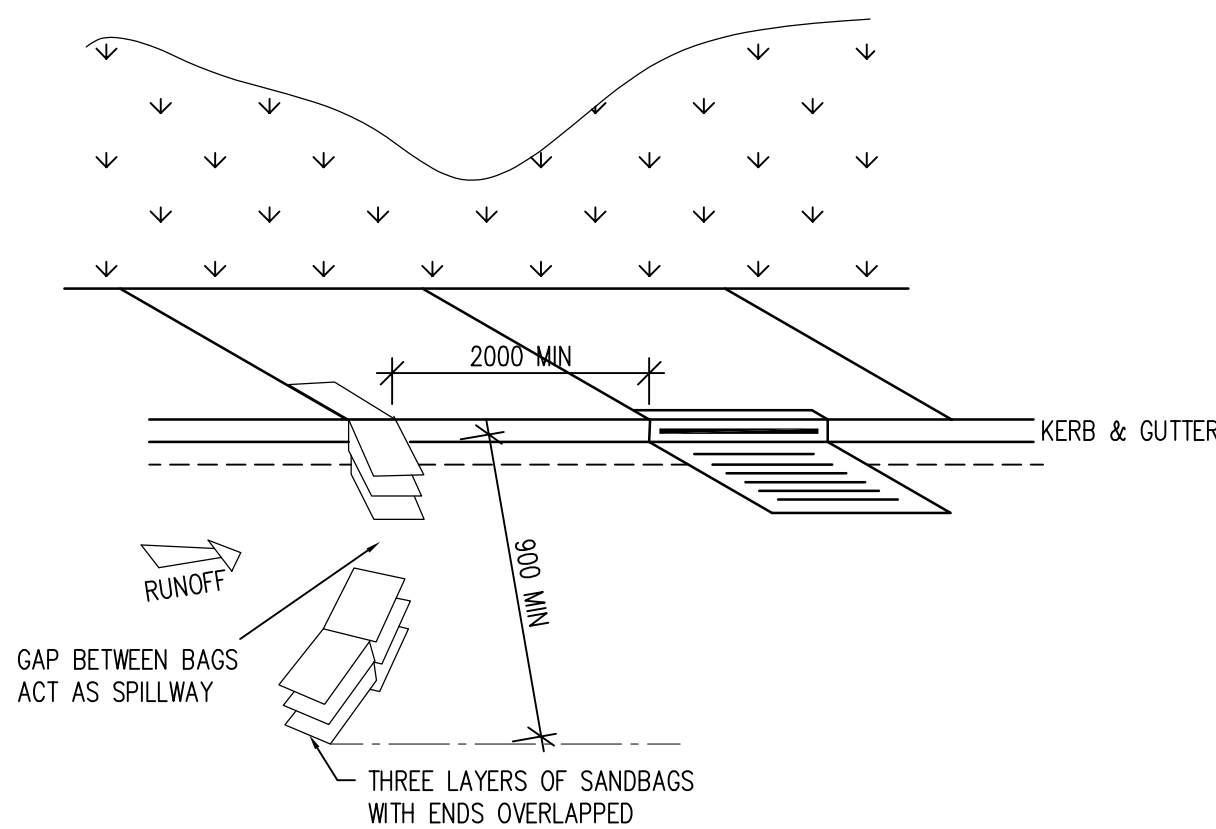
GEOTEXTILE FILTER FABRIC DROP INLET SEDIMENT TRAP
NTS

EROSION CONTROL NOTES:

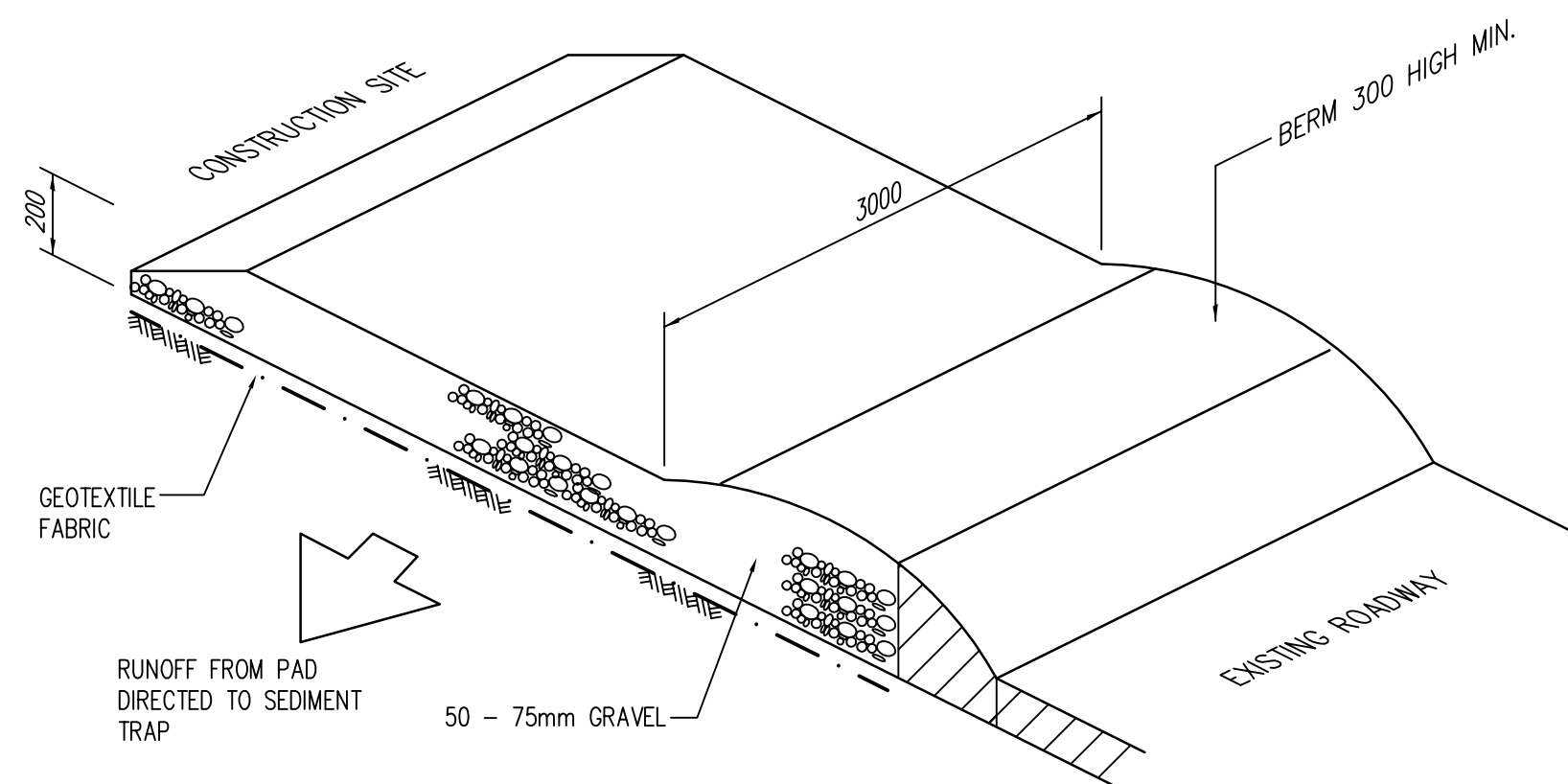
1. ALL EROSION AND SEDIMENT CONTROL MEASURES TO BE INSTALLED PRIOR TO SITE DISTURBANCE
2. STRIPPING OF GRASS AND VEGETATION ETC. FROM SITE SHALL BE KEPT TO A MINIMUM
3. TOPSOIL FROM ALL AREAS THAT WILL BE DISTURBED TO BE STRIPPED AND STOCKPILED ON SITE.
4. ALL SEDIMENT CONTROL STRUCTURES TO BE INSPECTED AFTER EACH RAINFALL EVENT FOR STRUCTURAL DAMAGE AND ALL TRAPPED SEDIMENT TO BE REMOVED TO A NOMINATED SOIL STOCKPILE SITE



GEOFABRIC LINED 'SILT' FENCE
N.T.S.



SANDBAG KERB INLET
SEDIMENT TRAP
N.T.S.



RUBBLE CROSSING
FOR USE AT ALL TRUCK/CONSTRUCTION
VEHICLE ENTRY POINTS TO THE SITE

ISSUE FOR DA

NOT TO BE USED FOR CONSTRUCTION PURPOSES

© COPYRIGHT Michael Ell Consulting Engineers Pty. Ltd.
The copyright of this drawing remains the property
of Michael Ell Consulting Engineers Pty. Ltd. and
must not be reproduced in whole or in part without
written permission. Do not scale off this drawing.
Use figured dimensions. Verify all dimensions on site.



LOCKED BAG 5022
PARRAMATTA NSW 2124
PHONE No 1800 738 718
<https://www.dpie.nsw.gov.au/land-and-housing-corporation>



Barry Rush & Associates Pty Ltd
Architects, Nominated Architect: Barry John Rush
ARB Registration No 3753
Suite 25A, 2 Beattie Street, Balmain, NSW
Phone: (02) 9555 8028 Email: info@barryrush.com.au
www.barryrush.com.au

REV	DATE	NOTATION/AMENDMENT
E	17.07.23	ISSUE FOR DA
D	01.10.20	FOR TENDER ISSUE
C	22.07.20	ARCH'S NEW PLAN
B	15.04.15	UPDATE PITS LOCATION
A	06.03.15	90% ISSUE
REV	DATE	NOTATION/AMENDMENT
DO NOT SCALE DRAWINGS. CHECK ALL DIMENSIONS ON SITE. FIGURED DIMENSIONS TAKE PRECEDENCE.		

ARCHITECT BARRY RUSH & ASSOCIATES PTY LTD PH (02) 9555 8028	STRUCTURAL CONSULTANT
PROJECT MANAGER LAND & HOUSING CORPORATION PH (02) 8753 9800	CIVIL AND HYDRAULIC CONSULTANT MICHAEL ELL CONSULTING ENGINEERS PTY LTD PH (02) 9807 5385
LANDSCAPE CONSULTANT	ELECTRICAL AND MECHANICAL CONSULTANT

BUSINESS PARTNER:

PROJECT:
**SENIORS LIVING
HOUSING DEVELOPMENT
98-102 ALBERT STREET
REVESBY**
LOTS 38,39 & 40 in Sect 13 DP 2343

TITLE:
**EROSION AND SEDIMENT
DETAILS**

FILE:
14236-C04e

STATUS: DA			
DATE: 15.04.15	SCALE: 1:20	Consultant Job No: 14236	PROJECT No: BGGXT
STAGE: DA	DRAWN: DC	DESIGNED: AG	APPROVED: REV: E

